

## ATTACHMENT 6

### SEWAGE TREATMENT PLANTS OPERATED BY SYDNEY WATER<sup>2</sup>

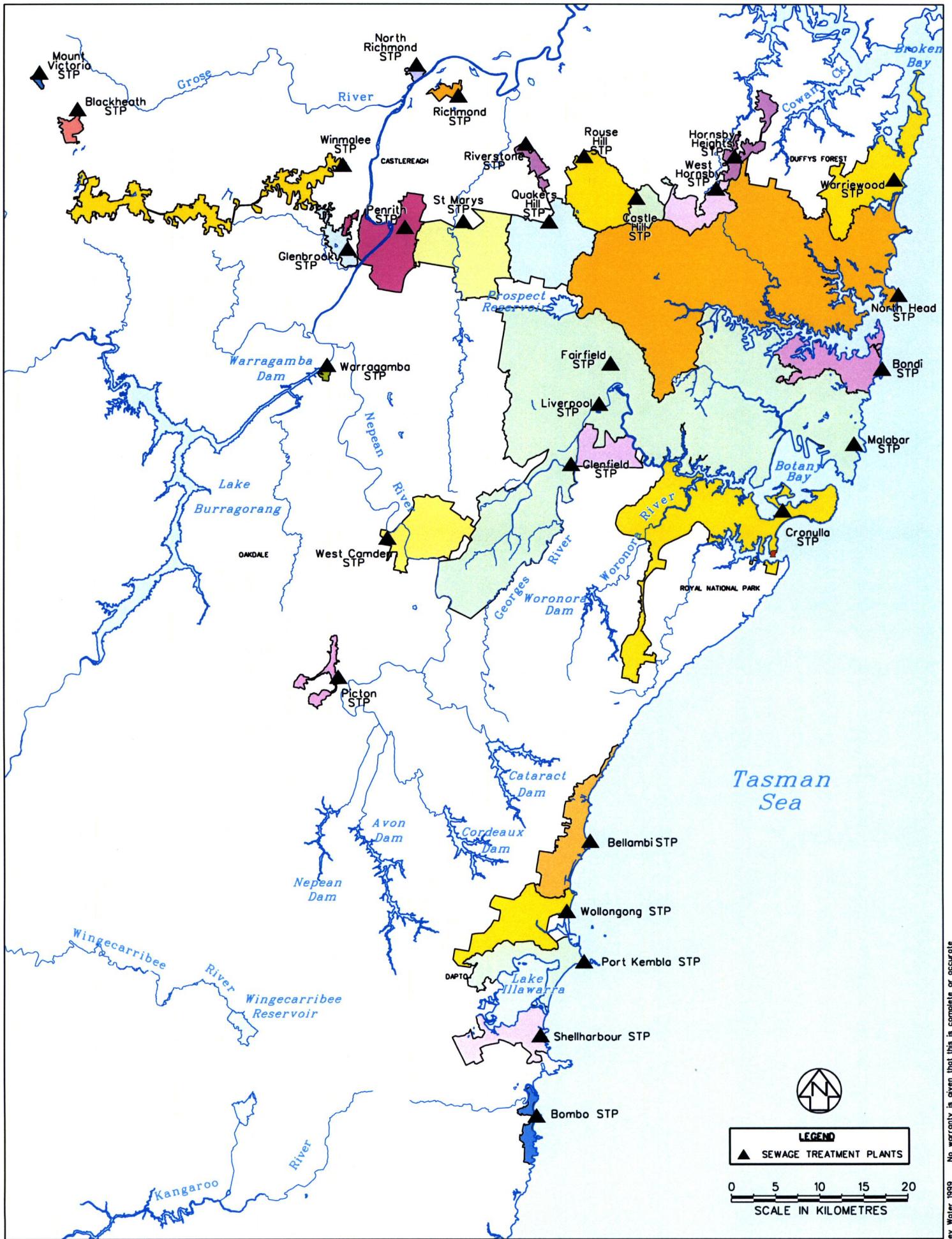
#### Sewage treatment plant discharges to the ocean

Treatment plant	Treatment level	Discharge (ML/day)	Equivalent population	Discharge Type	Discharge location
Warriewood	Secondary and disinfection	17.9	63,787	Shoreline	Turimetta Head
North Head	High-rate primary	362.8	1,106,185	Deepwater	3.7km from shoreline, 65m max. water depth, 762m diffuser zone
Bondi	High-rate primary	142.9	258,252	Deepwater	2.2km from shoreline, 63m max. water depth, 512m diffuser zone
Malabar	High-rate primary	490	1,482,500	Deepwater	3.6km from shoreline, 82m max. water depth, 720m diffuser zone
Cronulla	Tertiary and disinfection	60.9	221,026	Shoreline	Potter Point
Bellambi	Primary, sedimentation and disinfection	25	82,449	Nearshore	Bellambi Point
Wollongong	Secondary and disinfection	17.4	53,526	Nearshore	Coniston Beach
Port Kembla	Primary, chemically assisted sedimentation and disinfection	17.3	50,768	Shoreline	Red Point
Shellharbour	Secondary and disinfection	18.0	60,778	Nearshore	Shellharbour Beach
Bombo	Secondary, denitrification and disinfection	4.8	13,085	Shoreline	Bombo Beach
<b>Georges River Catchment</b>					
Glenfield	Secondary and disinfection	37.0	153,943		Effluent transported to Malabar STP; occasionally discharged to Georges River in wet weather
Liverpool	Secondary and disinfection	54.2	58,894		Effluent transported to Malabar STP; occasionally discharged to Georges River in wet weather
Fairfield	Primary	0			Treated sewage storm flows discharged to Orphan School Creek (to Georges River) during wet weather

<sup>2</sup> Sydney Water Annual Report, June 2003 – Environmental Indicators Compliance Report  
 Volume 1, pages 23 and 37  
[http://www.sydneypwater.com.au/html/about\\_us/annual\\_report\\_2003/supporting\\_documents/eicr\\_2003.pdf](http://www.sydneypwater.com.au/html/about_us/annual_report_2003/supporting_documents/eicr_2003.pdf)

## Sewage treatment plant discharges to rivers and streams

Treatment plant	Treatment level	Discharge (ML/day)	Equivalent population	Discharge location
<b>Hawkesbury-Nepean catchment</b>				
North Richmond	Tertiary and disinfection	1.3	5,383	Redbank Creek to the Hawkesbury River
West Camden	Tertiary and disinfection	8.6	44,132	Matahill Creek to the Nepean River
Richmond	Tertiary and disinfection	0.2	11,024	Reused for irrigation at the UWS Richmond campus and Richmond Golf Club; excess overflows to Rickabys Creek
Penrith	Tertiary and disinfection	23.3	82,432	Boundary Creek to the Nepean River
Picton	Tertiary and disinfection	0	13,288	Reused for onsite agriculture irrigation (100% in dry weather); wet-weather overflows to Stonequarry Creek
Warragamba	Tertiary and disinfection	0.5	1,664	Warragamba River
<b>Blue Mountains catchment</b>				
Blackheath	Secondary and microfiltration	1.0	5,546	Hat Hill Creek to the Grose River
Glenbrook	Tertiary and disinfection	3.3	13,066	Lapstone Creek to the Nepean River
Mt Victoria	Tertiary and disinfection	0.1	707	Fairy Dell Creek to the Coxs River
Winmalee	Tertiary and disinfection	15.1	52,751	Unnamed creek to the Nepean River
<b>South Creek catchment</b>				
Quakers Hill	Tertiary and disinfection	34.4	140,318	Breakfast Creek to Eastern Creek
St Marys	Tertiary and disinfection	36.2	144,715	Unnamed creek to South Creek
Riverstone	Tertiary and disinfection	1.9	8,403	Eastern Creek to South Creek
<b>Cattai Creek catchment</b>				
Castle Hill	Tertiary and disinfection	8.1	21,255	Cattai Creek
Rouse Hill	Tertiary and disinfection	8.3	48,824	A portion of flow is recycled to households for non-potable use; majority to Second Ponds Creek via wetlands basin
<b>Berowra Creek catchment</b>				
Hornsby Heights	Tertiary and disinfection	5.6	25,783	Calna Creek to Berowra Creek
West Hornsby	Tertiary and disinfection	17.1	50,457	Waitara Creek to Berowra Creek



## GENERAL SYSTEM OF WASTEWATER